

Coronavirus disease (COVID-19)

Situation Report – 160

Data as received by WHO from national authorities by 10:00 CEST, 28 June 2020

Today we report a record number of new cases in the last 24 hours globally (189 077 cases), with several countries reporting their highest number of new cases in a 24-hour period. As Dr Tedros remarked in his media briefing on 24 June, '[\(E\)ven as we continue research into vaccines and therapeutics we have an urgent responsibility to do everything we can with the tools we have now to suppress transmission and save lives.](#)' WHO has recently [updated guidance](#) on critical actions countries can take.

[Planes carrying more than 4.7 million items of personal protective equipment, procured by WHO/Europe with funding from the European Union, have landed in Azerbaijan, Belarus and Ukraine](#) over the last two days. The essential protective equipment will help health-care workers in the three countries respond effectively and safely to the COVID-19 pandemic.

The phenomenon of an 'infodemic' has escalated to a level that requires a coordinated response. An infodemic is an overabundance of information—some accurate and some not—occurring during an epidemic. [WHO is holding its first Infodemiology Conference, with a public conference on 29 June](#) followed by a scientific conference from 30 June through 16 July.

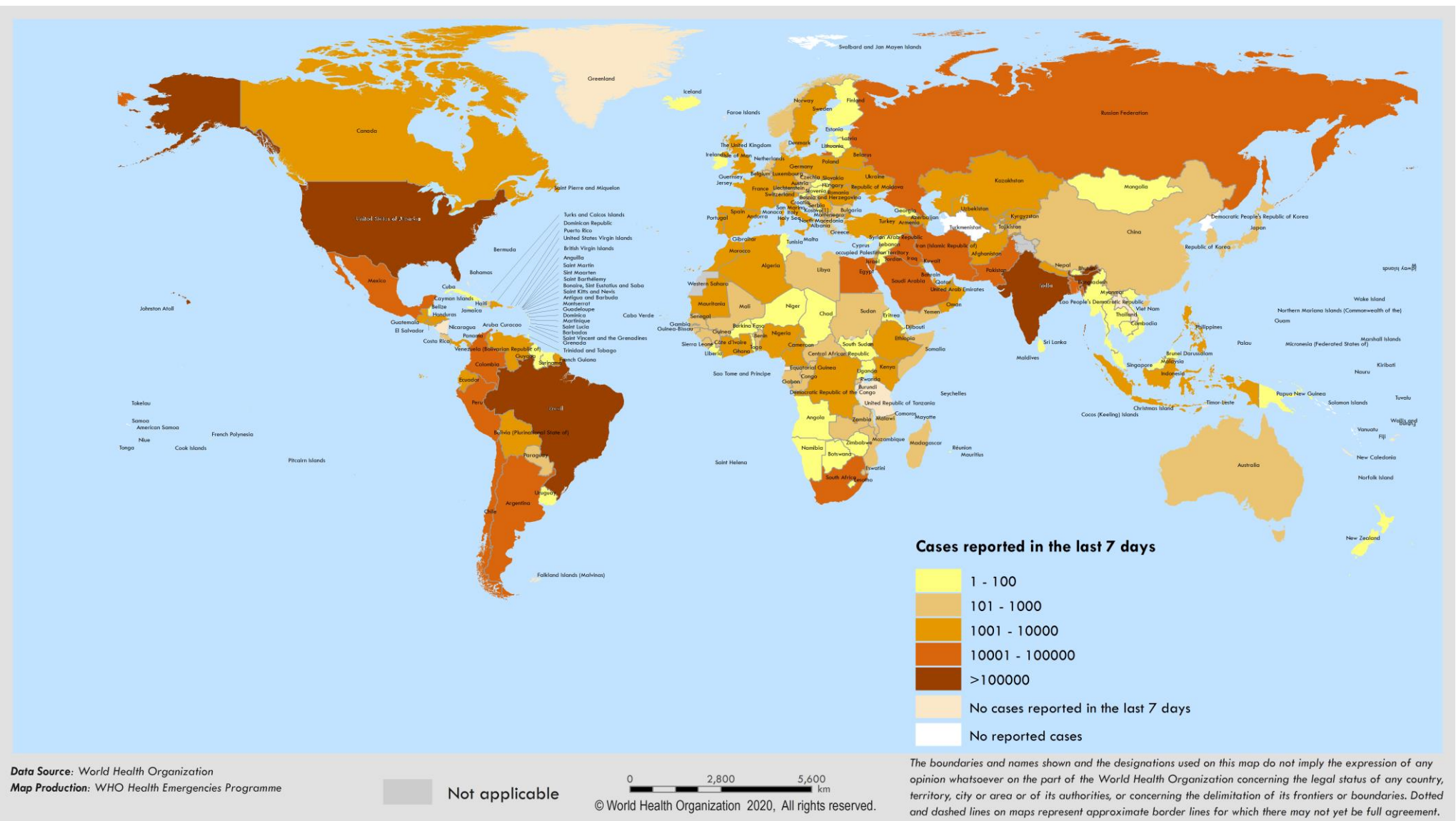
Situation in numbers (by WHO Region)

Total (new cases in last 24 hours)

Globally	9 843 073 cases (189 077)	495 760 deaths (4 612)
Africa	278 815 cases (10 713)	5 785 deaths (112)
Americas	4 933 972 cases (117 178)	241 931 deaths (3 169)
Eastern Mediterranean	1 024 222 cases (17 943)	23 449 deaths (485)
Europe	2 656 437 cases (16 586)	196 541 deaths (352)
South-East Asia	735 854 cases (25 399)	20 621 deaths (482)
Western Pacific	213 032 cases (1 258)	7 420 deaths (12)

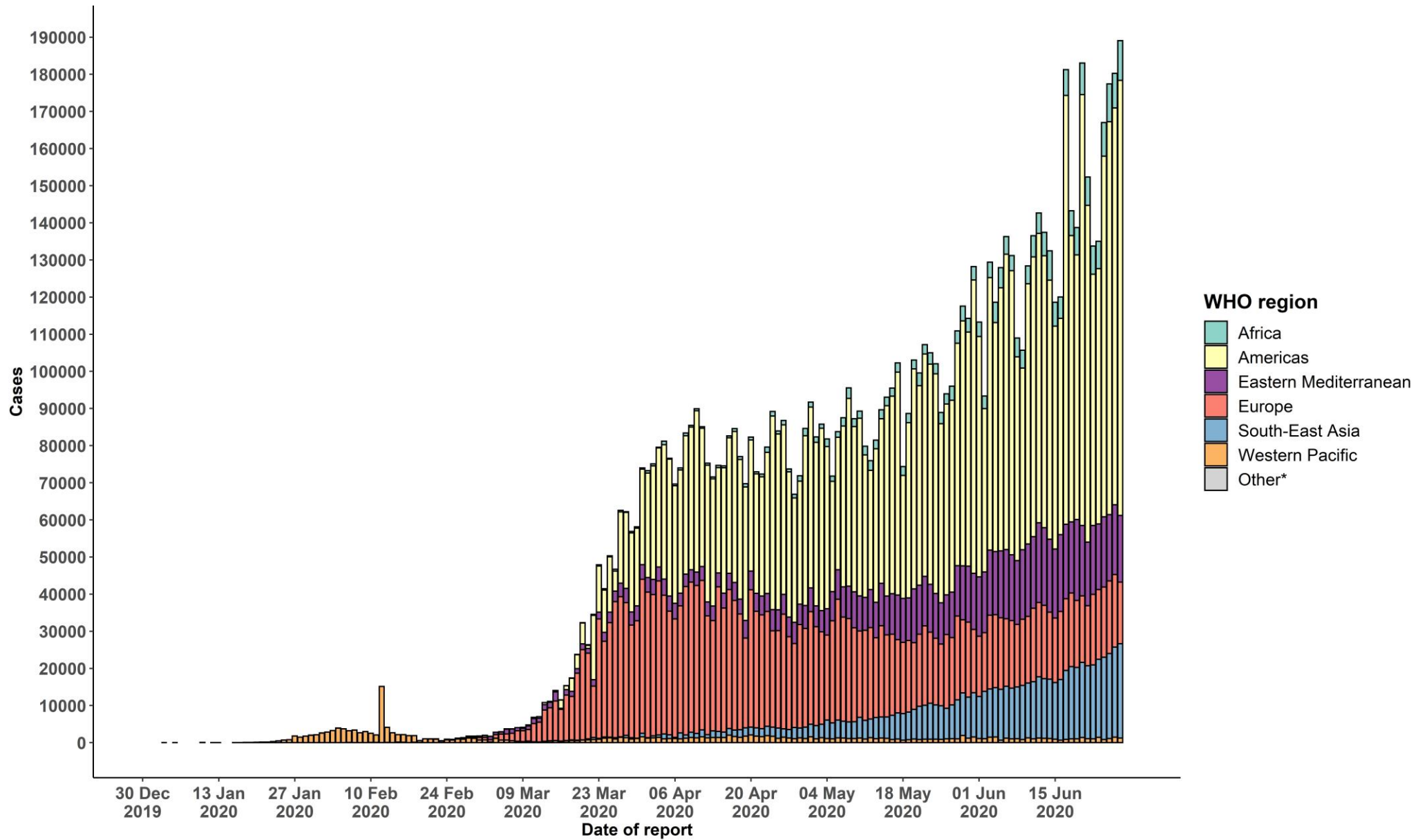
Surveillance

Figure 1. Number of confirmed COVID-19 cases reported in the last seven days by country, territory or area, 22 June to 28 June**



**See [Annex 1](#) for data, table and figure notes.

Figure 2. Number of confirmed COVID-19 cases, by date of report and WHO region, 30 December through 28 June**



**See [Annex 1](#) for data, table and figure notes.

Table 1. Countries, territories or areas with reported laboratory-confirmed COVID-19 cases and deaths, by WHO region. Data as of 10 AM CEST, 28 June 2020**

Reporting Country/Territory/Area	Total confirmed cases	Total confirmed new cases	Total deaths	Total new deaths	Transmission classification ⁱ	Days since last reported case
Africa						
South Africa	131 800	7 210	2 413	73	Community transmission	0
Nigeria	24 077	779	558	4	Community transmission	0
Ghana	16 431	597	103	0	Community transmission	0
Algeria	12 968	283	892	7	Community transmission	0
Cameroon	12 592	0	313	0	Community transmission	2
Côte d'Ivoire	8 944	205	66	2	Community transmission	0
Democratic Republic of the Congo	6 689	138	152	4	Community transmission	0
Senegal	6 459	105	102	4	Community transmission	0
Kenya	5 811	278	141	4	Community transmission	0
Ethiopia	5 570	145	94	5	Community transmission	0
Guinea	5 291	31	30	1	Community transmission	0
Gabon	5 209	0	40	0	Community transmission	1
Mauritania	3 907	168	120	1	Clusters of cases	0
Central African Republic	3 340	0	40	0	Community transmission	1
Mali	2 060	0	113	0	Community transmission	1
Madagascar	2 005	176	16	0	Clusters of cases	0
South Sudan	1 958	6	36	0	Clusters of cases	0
Guinea-Bissau	1 614	58	21	2	Community transmission	0
Zambia	1 531	0	21	0	Community transmission	1
Sierra Leone	1 410	16	59	0	Community transmission	0
Congo	1 245	41	40	2	Community transmission	0

Reporting Country/Territory/Area	Total confirmed cases	Total confirmed new cases	Total deaths	Total new deaths	Transmission classification ¹	Days since last reported case
Benin	1 124	71	14	0	Community transmission	0
Cabo Verde	1 091	64	12	2	Clusters of cases	0
Niger	1 059	0	67	0	Community transmission	2
Equatorial Guinea	1 043	0	12	0	Community transmission	35
Malawi	1 038	33	13	0	Clusters of cases	0
Burkina Faso	954	20	53	0	Community transmission	0
Rwanda	878	20	2	0	Sporadic cases	0
Chad	865	0	74	0	Community transmission	1
Mozambique	839	51	5	0	Clusters of cases	0
Uganda	833	0	0	0	Sporadic cases	1
Eswatini	745	14	8	0	Clusters of cases	0
Liberia	684	0	34	0	Community transmission	1
Togo	615	24	14	0	Community transmission	0
Zimbabwe	567	6	7	0	Sporadic cases	0
United Republic of Tanzania	509	0	21	0	Community transmission	51
Sao Tome and Principe	393	1	11	0	Clusters of cases	0
Mauritius	341	0	10	0	Clusters of cases	3
Comoros	272	0	7	0	Community transmission	2
Angola	259	47	10	0	Clusters of cases	0
Eritrea	191	24	0	0	Sporadic cases	0
Burundi	144	0	1	0	Clusters of cases	7
Namibia	136	34	0	0	Sporadic cases	0
Botswana	125	0	1	0	Clusters of cases	3

Reporting Country/Territory/Area	Total confirmed cases	Total confirmed new cases	Total deaths	Total new deaths	Transmission classification ¹	Days since last reported case
Seychelles	70	50	0	0	Clusters of cases	0
Gambia	45	1	2	0	Sporadic cases	0
Lesotho	24	0	0	0	Sporadic cases	1
Territoriesⁱⁱ						
Mayotte	2 540	14	35	1	Clusters of cases	0
Réunion	520	3	2	0	Clusters of cases	0
Americas						
United States of America	2 452 048	44 458	124 811	650	Community transmission	0
Brazil	1 274 974	46 860	55 961	990	Community transmission	0
Peru	272 364	3 762	8 939	178	Community transmission	0
Chile	267 766	4 406	5 347	279	Community transmission	0
Mexico	208 392	5 441	25 779	719	Community transmission	0
Canada	102 794	172	8 508	4	Community transmission	0
Colombia	84 442	3 843	2 811	157	Community transmission	0
Argentina	55 343	2 886	1 192	25	Community transmission	0
Ecuador	54 574	718	4 424	18	Community transmission	0
Dominican Republic	30 619	855	718	6	Community transmission	0
Panama	29 905	868	575	11	Community transmission	0
Bolivia (Plurinational State of)	29 423	920	934	21	Community transmission	0
Honduras	15 994	628	471	45	Community transmission	0
Guatemala	15 828	209	672	49	Community transmission	0
El Salvador	5 727	210	143	10	Community transmission	0
Haiti	5 722	179	98	2	Community transmission	0
Venezuela (Bolivarian Republic of)	4 779	216	41	2	Community transmission	0

Reporting Country/Territory/Area	Total confirmed cases	Total confirmed new cases	Total deaths	Total new deaths	Transmission classification ⁱ	Days since last reported case
Costa Rica	2 836	152	12	0	Clusters of cases	0
Cuba	2 330	5	86	1	Clusters of cases	0
Nicaragua	2 014	0	74	0	Community transmission	10
Paraguay	1 711	0	13	0	Community transmission	1
Uruguay	919	12	26	0	Clusters of cases	0
Jamaica	686	2	10	0	Clusters of cases	0
Suriname	391	18	10	0	Clusters of cases	0
Guyana	230	15	12	0	Clusters of cases	0
Trinidad and Tobago	124	1	8	0	Sporadic cases	0
Bahamas	104	0	11	0	Clusters of cases	12
Barbados	97	0	7	0	Clusters of cases	12
Saint Vincent and the Grenadines	29	0	0	0	Sporadic cases	10
Antigua and Barbuda	26	0	3	0	Clusters of cases	14
Belize	24	1	2	0	Sporadic cases	0
Grenada	23	0	0	0	Clusters of cases	32
Saint Lucia	19	0	0	0	Sporadic cases	22
Dominica	18	0	0	0	Clusters of cases	15
Saint Kitts and Nevis	15	0	0	0	No cases	68
Territoriesⁱⁱ						
Puerto Rico	7 066	144	152	1	Community transmission	0
French Guiana	3 461	191	12	1	Community transmission	0
Martinique	242	6	14	0	Clusters of cases	0
Cayman Islands	196	0	1	0	Clusters of cases	2
Guadeloupe	182	0	14	0	Clusters of cases	1

Reporting Country/Territory/Area	Total confirmed cases	Total confirmed new cases	Total deaths	Total new deaths	Transmission classification ¹	Days since last reported case
Bermuda	146	0	9	0	Sporadic cases	7
Aruba	101	0	3	0	No cases	53
United States Virgin Islands	81	0	6	0	Clusters of cases	1
Sint Maarten	77	0	15	0	No cases	22
Saint Martin	42	0	3	0	Sporadic cases	11
Curaçao	23	0	1	0	No cases	1
Turks and Caicos Islands	16	0	1	0	No cases	1
Falkland Islands (Malvinas)	13	0	0	0	No cases	63
Montserrat	11	0	1	0	No cases	75
British Virgin Islands	8	0	1	0	No cases	43
Bonaire, Sint Eustatius and Saba	7	0	0	0	No cases	33
Saint Barthélemy	6	0	0	0	No cases	89
Anguilla	3	0	0	0	No cases	85
Saint Pierre and Miquelon	1	0	0	0	No cases	81
Eastern Mediterranean						
Iran (Islamic Republic of)	220 180	2 456	10 364	125	Community transmission	0
Pakistan	202 955	4 072	4 118	83	Clusters of cases	0
Saudi Arabia	178 504	3 927	1 511	37	Clusters of cases	0
Qatar	93 663	879	110	1	Community transmission	0
Egypt	63 923	1 168	2 708	88	Clusters of cases	0
United Arab Emirates	47 360	387	311	1	Pending	0
Kuwait	44 391	688	344	3	Clusters of cases	0
Iraq	43 262	2 069	1 660	101	Community transmission	0
Oman	36 953	919	159	6	Community transmission	0

Reporting Country/Territory/Area	Total confirmed cases	Total confirmed new cases	Total deaths	Total new deaths	Transmission classification ⁱ	Days since last reported case
Afghanistan	30 967	351	729	26	Clusters of cases	0
Bahrain	25 267	462	78	5	Clusters of cases	0
Morocco	11 877	244	220	2	Clusters of cases	0
Sudan	9 258	0	572	0	Community transmission	1
Djibouti	4 643	0	52	0	Clusters of cases	1
Somalia	2 878	0	90	0	Sporadic cases	2
Lebanon	1 719	22	33	0	Clusters of cases	0
Tunisia	1 168	4	50	0	Sporadic cases	0
Jordan	1 111	7	9	0	Clusters of cases	0
Yemen	1 107	14	297	3	Community transmission	0
Libya	727	14	18	0	Clusters of cases	0
Syrian Arab Republic	256	2	9	2	Community transmission	0
Territoriesⁱⁱ						
occupied Palestinian territory	2 053	258	7	2	Clusters of cases	0
Europe						
Russian Federation	634 437	6 791	9 073	104	Clusters of cases	0
The United Kingdom	310 254	890	43 514	100	Community transmission	0
Spain	248 469	564	28 341	3	Community transmission	0
Italy	240 136	175	34 716	8	Community transmission	0
Turkey	195 883	1 372	5 082	17	Community transmission	0
Germany	193 499	256	8 957	3	Clusters of cases	0
France	156 156	0	29 700	0	Community transmission	1
Sweden	65 137	0	5 280	0	Community transmission	1
Belgium	61 209	103	9 732	1	Community transmission	0

Reporting Country/Territory/Area	Total confirmed cases	Total confirmed new cases	Total deaths	Total new deaths	Transmission classification ¹	Days since last reported case
Belarus	61 095	382	377	4	Community transmission	0
Netherlands	50 074	69	6 105	2	Community transmission	0
Ukraine	42 982	917	1 129	19	Community transmission	0
Portugal	41 189	323	1 561	6	Community transmission	0
Poland	33 714	319	1 435	6	Community transmission	0
Switzerland	31 472	69	1 681	0	Community transmission	0
Romania	26 022	325	1 589	10	Community transmission	0
Ireland	25 437	23	1 734	4	Clusters of cases	0
Armenia	24 645	736	426	6	Community transmission	0
Israel	22 519	0	312	0	Pending	1
Kazakhstan	20 780	461	173	15	Clusters of cases	0
Austria	17 562	64	700	2	Community transmission	0
Republic of Moldova	16 080	304	526	11	Community transmission	0
Azerbaijan	15 890	521	193	6	Clusters of cases	0
Serbia	13 792	227	267	2	Pending	0
Denmark	12 675	0	604	0	Community transmission	1
Czechia	11 298	260	347	2	Clusters of cases	0
Norway	8 815	0	249	0	Clusters of cases	1
Uzbekistan	7 725	235	20	0	Clusters of cases	0
Finland	7 191	0	328	0	Pending	1
North Macedonia	5 906	148	277	9	Clusters of cases	0
Tajikistan	5 799	52	52	0	Pending	0
Bulgaria	4 625	112	216	1	Clusters of cases	0
Kyrgyzstan	4 513	309	46	3	Clusters of cases	0

Reporting Country/Territory/Area	Total confirmed cases	Total confirmed new cases	Total deaths	Total new deaths	Transmission classification ⁱ	Days since last reported case
Luxembourg	4 217	44	110	0	Clusters of cases	0
Hungary	4 138	11	578	0	Community transmission	0
Bosnia and Herzegovina	4 107	173	179	2	Community transmission	0
Greece	3 366	23	191	0	Clusters of cases	0
Croatia	2 624	85	107	0	Sporadic cases	0
Albania	2 402	72	55	2	Clusters of cases	0
Estonia	1 986	0	69	0	Clusters of cases	1
Iceland	1 836	4	10	0	Community transmission	0
Lithuania	1 813	5	78	0	Community transmission	0
Slovakia	1 657	14	28	0	Clusters of cases	0
Slovenia	1 572	14	111	0	Clusters of cases	0
Latvia	1 115	3	30	0	Sporadic cases	0
Cyprus	994	2	19	0	Clusters of cases	0
Georgia	924	3	15	1	Sporadic cases	0
Andorra	855	0	52	0	Community transmission	9
San Marino	713	0	42	0	Community transmission	8
Malta	670	0	9	0	Sporadic cases	1
Montenegro	444	30	9	0	Clusters of cases	0
Monaco	99	0	1	0	Sporadic cases	21
Liechtenstein	83	0	1	0	Pending	63
Holy See	12	0	0	0	Sporadic cases	52
Territoriesⁱⁱ						
Kosovo ^[1]	2 547	96	37	3	Community transmission	0

Reporting Country/Territory/Area	Total confirmed cases	Total confirmed new cases	Total deaths	Total new deaths	Transmission classification ¹	Days since last reported case
Isle of Man	336	0	24	0	Pending	37
Jersey	319	0	31	0	Community transmission	2
Guernsey	252	0	13	0	Community transmission	56
Faroe Islands	187	0	0	0	Pending	65
Gibraltar	176	0	0	0	Clusters of cases	19
Greenland	13	0	0	0	Pending	30
South-East Asia						
India	528 859	19 906	16 095	410	Clusters of cases	0
Bangladesh	133 978	3 504	1 695	34	Community transmission	0
Indonesia	52 812	1 385	2 720	37	Community transmission	0
Nepal	12 309	554	28	1	Sporadic cases	0
Thailand	3 162	0	58	0	Clusters of cases	2
Maldives	2 305	22	8	0	Clusters of cases	0
Sri Lanka	2 033	19	11	0	Clusters of cases	0
Myanmar	296	3	6	0	Clusters of cases	0
Bhutan	76	6	0	0	Sporadic cases	0
Timor-Leste	24	0	0	0	Clusters of cases	65
Western Pacific						
China	85 190	18	4 648	0	Clusters of cases	0
Singapore	43 246	291	26	0	Clusters of cases	0
Philippines	34 803	730	1 236	12	Community transmission	0
Japan	18 390	93	971	0	Clusters of cases	0
Republic of Korea	12 715	62	282	0	Clusters of cases	0

Reporting Country/Territory/Area	Total confirmed cases	Total confirmed new cases	Total deaths	Total new deaths	Transmission classification ¹	Days since last reported case
Malaysia	8 616	10	121	0	Clusters of cases	0
Australia	7 641	46	104	0	Clusters of cases	0
New Zealand	1 176	4	22	0	Clusters of cases	0
Viet Nam	355	2	0	0	Clusters of cases	0
Mongolia	219	0	0	0	Sporadic cases	1
Brunei Darussalam	141	0	3	0	Clusters of cases	51
Cambodia	139	0	0	0	Sporadic cases	1
Lao People's Democratic Republic	19	0	0	0	Sporadic cases	76
Fiji	18	0	0	0	Sporadic cases	68
Papua New Guinea	11	0	0	0	Sporadic cases	2
Territoriesⁱⁱ						
Guam	240	0	5	0	Clusters of cases	1
French Polynesia	62	2	0	0	Sporadic cases	0
Northern Mariana Islands (Commonwealth of the)	30	0	2	0	Pending	18
New Caledonia	21	0	0	0	Sporadic cases	18
Subtotal for all regions	9 842 332	189 077	495 747	4 612		
Other*	741	0	13	0	Not applicable	-
Grand total	9 843 073	189 077	495 760	4 612		

**See [Annex 1](#) for data, table and figure notes.

Technical guidance and other resources

- To view all technical guidance documents regarding COVID-19, please go to [this webpage](#).
- Updates from WHO regional offices
 - [WHO AFRO](#)
 - [WHO EMRO](#)
 - [WHO EURO](#)
 - [WHO PAHO](#)
 - [WHO SEARO](#)
 - [WHO WPRO](#)
- [Research and Development](#)
- [Online courses on COVID-19](#) and in [additional national languages](#)
- [The Strategic Preparedness and Response Plan](#) (SPRP) outlining the support the international community can provide to all countries to prepare and respond to the virus
- [WHO Coronavirus Disease \(COVID-19\) Dashboard](#)
- [Weekly COVID-19 Operations Updates](#)

Recommendations and advice for the public

- [Protect yourself](#)
- [Questions and answers](#)
- [Travel advice](#)
- [EPI-WIN](#): tailored information for individuals, organizations and communities

Case definitions

WHO periodically updates the [Global Surveillance for human infection with coronavirus disease \(COVID-19\)](#) document which includes surveillance definitions.

Definition of COVID-19 death

A COVID-19 death is defined for surveillance purposes as a death resulting from a clinically compatible illness in a probable or confirmed COVID-19 case, unless there is a clear alternative cause of death that cannot be related to COVID-19 disease (e.g. trauma). There should be no period of complete recovery between the illness and death.

Further guidance for certification and classification (coding) of COVID-19 as cause of death is available [here](#) and [here](#).

Annex 1: Data, table and figure notes

Caution must be taken when interpreting all data presented. Differences are to be expected between information products published by WHO, national public health authorities, and other sources using different inclusion criteria and different data cut-off times. While steps are taken to ensure accuracy and reliability, all data are subject to continuous verification and change. Case detection, definitions, testing strategies, reporting practice, and lag times differ between countries/territories/areas. These factors, amongst others, influence the counts presented, with variable underestimation of true case and death counts, and variable delays to reflecting these data at global level.

The designations employed, and the presentation of these materials do not imply the expression of any opinion whatsoever on the part of WHO concerning the legal status of any country, territory or area or of its authorities, or concerning the delimitation of its frontiers or boundaries. Dotted and dashed lines on maps represent approximate border lines for which there may not yet be full agreement. Countries, territories and areas are arranged under the administering WHO region.

The mention of specific companies or of certain manufacturers' products does not imply that they are endorsed or recommended by WHO in preference to others of a similar nature that are not mentioned. Errors and omissions excepted, the names of proprietary products are distinguished by initial capital letters.

^[1] All references to Kosovo should be understood to be in the context of the United Nations Security Council resolution 1244 (1999). In the map, number of cases of Serbia and Kosovo (UNSCR 1244, 1999) have been aggregated for visualization purposes.

Counts reflect laboratory-confirmed cases and deaths, based on [WHO case definitions](#), unless stated otherwise (see Country, territory, or area-specific updates and errata), and include both domestic and repatriated cases.

Other*: includes cases reported from international conveyances.

Due to the recent trend of countries conducting data reconciliation exercises which remove large numbers of cases or deaths from their total counts, WHO will now display such data as negative numbers in the "new cases" / "new deaths" columns as appropriate. This will aid readers in identifying when such adjustments occur. When additional details become available that allow the subtractions to be suitably apportioned to previous days, graphics will be updated accordingly. Prior situation reports will not be edited; see covid19.who.int for the most up-to-date data.

Additional table notes

ⁱ Transmission classification is based on a process of country/territory/area self-reporting. Classifications are reviewed on a weekly basis and may be revised as new information becomes available. Differing degrees of transmission may be present within countries/territories/areas; classification is based on the highest category reported within a country/territory/area. Categories:

- No cases: with no confirmed cases
- Sporadic cases: with one or more cases, imported or locally detected
- Clusters of cases: experiencing cases, clustered in time, geographic location and/or by common exposures

- Community transmission: experiencing larger outbreaks of local transmission defined through an assessment of factors including, but not limited to: large numbers of cases not linkable to transmission chains; large numbers of cases from sentinel lab surveillance; and/or multiple unrelated clusters in several areas of the country/territory/area
- Pending: transmission classification has not been reported to WHO

ii “Territories” include territories, areas, overseas dependencies and other jurisdictions of similar status.

Country, territory, or area-specific updates and errata

- **Update 28 June 2020, Czechia:** Counts adjusted retrospectively by national authorities: 4 deaths were excluded on 27 June
- **Update 28 June 2020, Ukraine:** Counts adjusted retrospectively by national authorities: an additional 948 cases and 24 deaths were reported on 27 June